

HELPING INTERNATIONAL FAMILIES NAVIGATE U.S. FINANCIAL AID



REGIONAL INSTITUTE
The Americas 2025

The purpose of today's presentation...

Who are the families you are working with?

1. Student and parent are not U.S. citizens
2. Student is a U.S. citizen, parent is not
3. Student and parent are U.S. citizens living abroad

First, some financial aid basics...

Institutions discount pricing in two ways:

1. Need-based aid
2. Merit aid

Need-Based Aid

Sources of need-based aid:

- Government (federal and state) – citizens and eligible non-citizens only
- Institutional grants and scholarships – all undergraduates
- Campus employment - both citizens and non-citizens

Need-Based Aid

How is need determined?

- FAFSA (Free Application for Federal Student Aid)
- CSS Profile
- ISAFA (Int'l Student Application for Financial Assistance)
- ISFAA (Int'l Student Financial Aid Application)
- Other institutional forms

Need-Based Aid

What do the forms look at?

1. Income (largest driver of need eligibility)
2. Assets (assessed at between 5 and 5.64 cents on the dollar)
3. Family size
4. Whether the student is dependent or independent

Need-Based Aid

$$\text{COA} - \text{SAI} = \text{Need}$$

Cost of attendance minus Student Aid Index equals need

Need-Based Aid

Who qualifies for need-based aid, and
who does not?

Need-Based Aid

Let's talk about the income threshold.

Need-Based Aid

Let's talk about how assets are assessed.

Need-Based Aid

Reportable assets

1. Cash, checking and non-retirement savings (including 529s), investment accounts, CDs, stocks and bonds, etc.
2. Equity in primary residence (CSS Profile only)
3. Equity in second homes and real estate investments
4. Equity in family-owned business or farm
5. Trust funds (asset of the beneficiary, often the student)

Need-Based Aid

Non-reportable assets

1. Retirement accounts
2. Life insurance policies
3. Personal possessions (e.g., art, jewelry, cars, etc.)

Merit Aid

The biggest myth about merit aid...

Merit Aid

Awarded by the admission office to any student the institution wants to attract

How do we help families make college more affordable?

“It’s all about the list.” -Joan Liu

Let's look at two different students who are not U.S. citizens:

1. Sofia has no demonstrated financial need.
2. Juan has substantial demonstrated financial need.

How do we build Sofia's list with schools that are generous with merit aid?



HOME THE TEAM WHAT WE DO ADVISING OPTIONS SUCCESS RESOURCES

HAPPY, CHALLENGED, SUCCESSFUL

our goal for every student we work with

HOW WE DO IT

Financial Aid for Undergraduate International Noncitizens Class of 2027



PLEASE SEE KEY AND CAVEATS/EXPLANATIONS/DISCLAIMERS AT BOTTOM OF CHART

Compare smaller groups of institutions by selecting from the four boxes below:

Institution

State

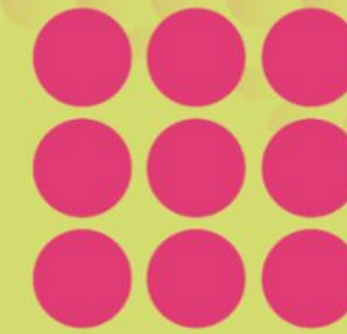
Region

Aid Policy

Institution	State	Region	Aid Policy	Total Cost of Attendance (out-of-state)(1)	Full-Time Undergrads	Full-Time International Noncitizen Undergrads	Percent of International Noncitizens to All Undergrads	Average International Noncitizen Aid Award	Percent of International Noncitizens Receiving Aid
Adelphi University	NY	Mid-Atlantic		\$71,834					
Agnes Scott College	GA	Southeast	Need & Merit	\$64,812	896	19	2% <div></div>	\$34,974	100% <div></div>
Albany College of Pharmacy ...	NY	Mid-Atlantic	Merit	\$56,015	504	24	5% <div></div>	\$15,500	138% <div></div>
Albion College	MI	Great Lakes	Merit	\$70,116	1,341	52	4% <div></div>	\$46,808	98% <div></div>
Alfred University	NY	Mid-Atlantic	Merit	\$57,900	1,399	107	8% <div></div>	\$25,387	121% <div></div>
Allegheny College	PA	Mid-Atlantic	Need & Merit	\$72,256	1,153	63	5% <div></div>	\$43,598	97% <div></div>
Alma College	MI	Great Lakes		\$63,940					
American University	DC	Mid-Atlantic	Merit	\$76,175	7,357	502	7% <div></div>	\$40,714	10% <div></div>
Amherst College	MA	New England	Need-based	\$87,640	2,005	236	12% <div></div>	\$81,272	84% <div></div>
Antioch College	OH	Great Lakes		\$50,383					

INTERACTIVE CHART

Financial Aid for Undergraduate International Noncitizens Class of 2027

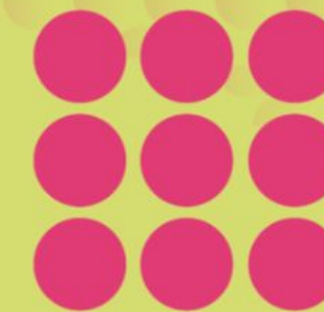


PLEASE SEE KEY AND CAVEATS/EXPLANATIONS/DISCLAIMERS AT BOTTOM OF CHART

Compare smaller groups of institutions by selecting from the four boxes below:

Institution	State	Region	Aid Policy	Total Cost of Attendance (out-of-state)(1)	Full-Time Undergrads	Full-Time International Noncitizen Undergrads	Percent of International Noncitizens to All Undergrads	Average International Noncitizen Aid Award	Percent of International Noncitizens Receiving Aid
Adelphi University	NY	Mid-Atlantic		\$71,834					
Agnes Scott College	GA	Southeast	Need & Merit	\$64,812	896	19	2% <div></div>	\$34,974	100% <div></div>
Albany College of Pharmacy ...	NY	Mid-Atlantic	Merit	\$56,015	504	24	5% <div></div>	\$15,500	138% <div></div>
Albion College	MI	Great Lakes	Merit	\$70,116	1,341	52	4% <div></div>	\$46,808	98% <div></div>

Financial Aid for Undergraduate International Noncitizens Class of 2027



PLEASE SEE KEY AND CAVEATS/EXPLANATIONS/DISCLAIMERS AT BOTTOM OF CHART

Compare smaller groups of institutions by selecting from the four boxes below:

Institution ▾

State ▾

Region ▾

Aid Policy (1)

Type to search

☐ No Aid

☐ Need-based

☐ Need & Merit

☐ Need

☒ Merit

Institution	State	Region	Aid Policy	Total Cost of Attendance (out-of-state)(1)	Full-Time Undergrads	Full-Time International Noncitizen Undergrads	Percent of International Noncitizens to All Undergrads
Albany College of Pharmacy ...	NY	Mid-Atlantic	Merit	\$56,015	504	24	5% <div></div>
Albion College	MI	Great Lakes	Merit	\$70,116	1,341	52	4% <div></div>
Alfred University	NY	Mid-Atlantic	Merit	\$57,900	1,399	107	8% <div></div>
American University	DC	Mid-Atlantic	Merit	\$76,175	7,357	502	7% <div></div>
Arizona State University	AZ	Southwest	Merit	\$53,412	59,765	4,905	8% <div></div>

Institution	State	Region	Aid Policy	Total Cost of Attendance (out-of-state)(1)	Full-Time Undergrads	Full-Time International Noncitizen Undergrads	Percent of International Noncitizens to All Undergrads	Average International Noncitizen Aid Award	Percent of International Noncitizens Receiving Aid
Albany College of Pharmacy...	NY	Mid-Atlantic	Merit	\$56,015	504	24	5% <div></div>	\$15,500	138% <div></div>
Albion College	MI	Great Lakes	Merit	\$70,116	1,341	52	4% <div></div>	\$46,808	98% <div></div>
Alfred University	NY	Mid-Atlantic	Merit	\$57,900	1,399	107	8% <div></div>	\$25,387	121% <div></div>
American University	DC	Mid-Atlantic	Merit	\$76,175	7,357	502	7% <div></div>	\$40,714	10% <div></div>
Arizona State University	AZ	Southwest	Merit	\$53,412	59,765	4,905	8% <div></div>	\$12,182	51% <div></div>
Austin College	TX	Southwest	Merit	\$62,620	1,123	13	1% <div></div>	\$34,242	100% <div></div>
Baylor University	TX	Southwest	Merit	\$74,269	14,788	444	3% <div></div>	\$24,763	67% <div></div>
Belmont University	TN	Southeast	Merit	\$62,570	7,035	68	1% <div></div>	\$27,583	74% <div></div>
Bentley University	MA	New England	Merit	\$79,960	4,015	604	15% <div></div>	\$21,364	45% <div></div>
Boston University	MA	New England	Merit	\$86,363	17,664	3,899	22% <div></div>	\$45,811	6% <div></div>
Bradley University	IL	Great Lakes	Merit	\$55,970	4,026	85	2% <div></div>	\$33,693	99% <div></div>
Butler University	IN	Great Lakes	Merit	\$67,210	4,491	49	1% <div></div>		0% <div></div>
California Poly State U. - San...	CA	West Coast	Merit	\$52,241	19,872	246	1% <div></div>	\$9,743	18% <div></div>
Catholic University	DC	Mid-Atlantic	Merit	\$77,784	2,880	94	3% <div></div>	\$41,438	74% <div></div>
Chapman University	CA	West Coast	Merit	\$85,080	7,448	218	3% <div></div>	\$19,541	56% <div></div>

Institution	State	Region	Aid Policy	Total Cost of Attendance (out-of-state)(1)	Full-Time Undergrads	Full-Time International Noncitizen Undergrads	Percent of International Noncitizens to All Undergrads	Average International Noncitizen Aid Award ▾	Percent of International Noncitizens Receiving Aid
Loyola University Maryland	MD	Mid-Atlantic	Merit	\$75,590	3,945	88	2% <div></div>	\$52,036	72% <div></div>
Quinnipiac University	CT	New England	Merit	\$73,320	6,070	115	2% <div></div>	\$49,862	100% <div></div>
Albion College	MI	Great Lakes	Merit	\$70,116	1,341	52	4% <div></div>	\$46,808	98% <div></div>
Boston University	MA	New England	Merit	\$86,363	17,664	3,899	22% <div></div>	\$45,811	6% <div></div>
University of Denver	CO	Rocky Mts	Merit	\$80,536	5,721	194	3% <div></div>	\$45,790	92% <div></div>
Rensselaer Polytechnic Instit...	NY	Mid-Atlantic	Merit	\$82,404	5,882	523	9% <div></div>	\$45,001	16% <div></div>
Southern Methodist Univers...	TX	Southwest	Merit	\$86,090	6,947	257	4% <div></div>	\$43,760	64% <div></div>
Wabash College	IN	Great Lakes	Merit	\$65,225	839	39	5% <div></div>	\$42,284	97% <div></div>
Creighton University	NE	Plains	Merit	\$63,790	4,172	85	2% <div></div>	\$41,874	84% <div></div>
Catholic University	DC	Mid-Atlantic	Merit	\$77,784	2,880	94	3% <div></div>	\$41,438	74% <div></div>
American University	DC	Mid-Atlantic	Merit	\$76,175	7,357	502	7% <div></div>	\$40,714	10% <div></div>
The Citadel	SC	Southeast	Merit	\$58,680	2,475	22	1% <div></div>	\$40,442	41% <div></div>
University of Vermont	VT	New England	Merit	\$60,798	11,064	109	1% <div></div>	\$39,514	89% <div></div>
Springfield College	MA	New England	Merit	\$61,559	1,906	80	4% <div></div>	\$36,148	99% <div></div>
Widener University	PA	Mid-Atlantic	Merit	\$72,466	2,581	44	2% <div></div>	\$35,059	86% <div></div>
Fordham University	NY	Mid-Atlantic	Merit	\$89,575	9,821	735	7% <div></div>	\$34,865	55% <div></div>

How do we build Juan's list?

1. Make sure he is a high-flyer in every way

How high a flyer must Juan be?

“The student pretty much needs to ‘walk on water’ to get an international full ride.”

How do we build Juan's list?

1. Make sure he is a high-flyer in every way
2. Find schools generous with need, merit, or both

Compare smaller groups of institutions by selecting from the four boxes below:

Institution ▾

State ▾

Region ▾

Institution ▴	State	Region	Aid Policy	Total Cost of Attendance (out-of-state)(1)	Full-Time Undergrads	Full-Time International Noncitizen Undergrads	Percent of International Noncitizens to All Undergrads
Adelphi University	NY	Mid-Atlantic		\$71,834			
Agnes Scott College	GA	Southeast	Need & Merit	\$64,812	896	19	2% <div></div>
Albany College of Pharmacy ...	NY	Mid-Atlantic	Merit	\$56,015	504	24	5% <div></div>
Albion College	MI	Great Lakes	Merit	\$70,116	1,341	52	4% <div></div>
Alfred University	NY	Mid-Atlantic	Merit	\$57,900	1,399	107	8% <div></div>
Allegheny College	PA	Mid-Atlantic	Need & Merit	\$72,256	1,153	63	5% <div></div>
Alma College	MI	Great Lakes		\$63,940			
American University	DC	Mid-Atlantic	Merit	\$76,175	7,357	502	7% <div></div>
Amherst College	MA	New England	Need-based	\$87,640	2,005	236	12% <div></div>
Antioch College	OH	Great Lakes		\$50,383			

—

Aid Policy (Exclude 1)

🔍

Type to search

☐

No Aid

☒

Need-based

☒

Need & Merit

☒

Need

☒

Merit

Compare smaller groups of institutions by selecting from the four boxes below:

Institution

State

Region

Aid Policy: Exclude No Aid (1)

Institution	State	Region	Aid Policy	Total Cost of Attendance (out-of-state)(1)	Full-Time Undergrads	Full-Time International Noncitizen Undergrads	Percent of International Noncitizens to All Undergrads	Average International Noncitizen Aid Award	Percent of International Noncitizens Receiving Aid
Wellesley College	MA	New England	Need & Merit	\$86,290	2,316	322	14%	\$86,187	25%
Georgetown University	DC	Mid-Atlantic	Need-based	\$88,741	7,186	1,019	14%	\$85,795	4%
Duke University	NC	Southeast	Need & Merit	\$87,072	6,417	441	7%	\$84,776	41%
Haverford College	PA	Mid-Atlantic	Need-based	\$90,382	1,419	154	11%	\$84,407	36%
Williams College	MA	New England	Need	\$84,860	2,055	167	8%	\$84,142	72%
Wesleyan University	CT	New England		\$89,020	2,962	308	10%	\$83,486	33%
Columbia University	NY	Mid-Atlantic	Need & Merit	\$89,587	6,578	1,015	15%	\$83,347	22%
Cornell University	NY	Mid-Atlantic	Need & Merit	\$88,140	15,955	1,176	7%	\$83,060	28%
Washington and Lee Univers...	VA	Southeast	Need & Merit	\$87,000	1,884	134	7%	\$82,358	87%
College of the Holy Cross	MA	New England	Need & Merit	\$80,500	3,210	87	3%	\$81,875	1%
Dartmouth College	NH	New England	Need-based	\$87,793	4,367	603	14%	\$81,378	69%
Amherst College	MA	New England	Need-based	\$87,640	2,005	236	12%	\$81,272	84%
Providence College	RI	New England	Need & Merit	\$80,640	4,250	64	2%	\$80,368	91%

Institutions that are need-blind for int'l undergraduates:

Amherst College

Bowdoin College

Brown University

Dartmouth College

Harvard College

Massachusetts Institute of Technology

University of Notre Dame

Princeton University

Yale University

Institutions that meet full need for int'l undergraduates:

Amherst*
Bates
Bennington
Berea
Bowdoin*
Brandeis
Brown*
Bryn Mawr
Caltech
Carleton
Claremont McKenna
Colby
Colgate
Colorado College
Columbia
Connecticut College
Cornell

Dartmouth*
Davidson
Denison
Duke
Franklin & Marshall
Grinnell
Hamilton
Harvard*
Harvey Mudd
Haverford
Holy Cross
Johns Hopkins
Kenyon
Lafayette
Lehigh
Macalester
MIT*

Middlebury
Mount Holyoke
Notre Dame*
Oberlin
Occidental
Penn
Pitzer
Pomona
Princeton*
Reed
Rhodes
Rice
Sarah Lawrence
Sewanee
Skidmore
Smith
Stanford

Swarthmore
Trinity College
Tufts
U Chicago
U Miami
U Richmond
U Rochester
Vanderbilt
Vassar
Wake Forest
Washington and Lee
WashU
Wellesley
Wesleyan
Whitman
Williams
Yale*

* Need-blind for international undergraduates

How do we build Juan's list?

1. Make sure he is a high-flyer in every way
2. Find schools generous with need, merit, or both
3. Identify ED and ED II options

“Our admit rate for regular decision for international students seeking financial aid was less than 1%....Early decision gets you into the 5-10% admit range, so I always recommend Early....Regular is nearly impossible with nearly perfect stats, resumes, essays, etc.”

“Our admit rate for int'l students with financial need was ~0.5%”

“Yeah, I think our rate might be closer to 1% this year...it's definitely changed so much over the past 5 years!”

Early Decision and Regular Decision Acceptance Rates Class of 2027



PLEASE SEE KEY AND CAVEATS/EXPLANATIONS/DISCLAIMERS AT BOTTOM OF CHART

Compare smaller groups of institutions by selecting them from the 'Institution' box below:

Institution ▼

Institution ▲	Additional Application Plans	Early Decision (ED) Acceptance Rate (1)	Regular Decision (RD) Acceptance Rate (2)	ED to RD Acceptance Ratio	ED Admits as Percent of Freshman Class
Agnes Scott College	EA	89.0% <div><div></div></div>	67.4% <div><div></div></div>	1.3 <div><div></div></div>	7.1% <div><div></div></div>
Allegheny College	EA	28.0% <div><div></div></div>	51.2% <div><div></div></div>	0.5 <div><div></div></div>	10.5% <div><div></div></div>
American University	ED II	85.0% <div><div></div></div>	45.7% <div><div></div></div>	1.9 <div><div></div></div>	35.8% <div><div></div></div>
Amherst College		27.0% <div><div></div></div>	8.8% <div><div></div></div>	3.1 <div><div></div></div>	37.9% <div><div></div></div>
Assumption University		<div><div></div></div>	<div><div></div></div>	<div><div></div></div>	<div><div></div></div>
Augustana College	EA	<div><div></div></div>	67.6% <div><div></div></div>	<div><div></div></div>	0.0% <div><div></div></div>
Babson College	ED II, EA	33.0% <div><div></div></div>	14.7% <div><div></div></div>	2.2 <div><div></div></div>	48.7% <div><div></div></div>
Barnard College		27.0% <div><div></div></div>	4.8% <div><div></div></div>	5.6 <div><div></div></div>	64.4% <div><div></div></div>
Bates College	ED II	42.0% <div><div></div></div>	10.2% <div><div></div></div>	4.1 <div><div></div></div>	66.9% <div><div></div></div>
Baylor University	ED II, EA	<div><div></div></div>	51.0% <div><div></div></div>	<div><div></div></div>	0.0% <div><div></div></div>
Bennington College	ED II, EA	21.0% <div><div></div></div>	41.7% <div><div></div></div>	0.5 <div><div></div></div>	16.2% <div><div></div></div>
Bentley University	ED II	67.0% <div><div></div></div>	47.5% <div><div></div></div>	1.4 <div><div></div></div>	31.3% <div><div></div></div>

INTERACTIVE CHART



Institution ^	Additional Application Plans	Early Decision (ED) Acceptance Rate (1)	Regular Decision (RD) Acceptance Rate (2)	ED to RD Acceptance Ratio	ED Admits as Percent of Freshman Class
Agnes Scott College	EA, EA II	89.0% <div><div></div></div>	67.4% <div><div></div></div>	1.3 <div><div></div></div>	7.1% <div><div></div></div>
Albany College of Pharmacy and Health Sciences	EA	<div><div></div></div>	59.1% <div><div></div></div>	<div><div></div></div>	0.0% <div><div></div></div>
Albion College	EA	<div><div></div></div>	83.2% <div><div></div></div>	<div><div></div></div>	0.0% <div><div></div></div>
Allegheny College	EA	28.0% <div><div></div></div>	51.2% <div><div></div></div>	0.5 <div><div></div></div>	10.5% <div><div></div></div>
American University	ED II, EA	85.0% <div><div></div></div>	45.7% <div><div></div></div>	1.9 <div><div></div></div>	35.8% <div><div></div></div>
Amherst College		27.0% <div><div></div></div>	8.8% <div><div></div></div>	3.1 <div><div></div></div>	37.9% <div><div></div></div>
Antioch College	ED II	<div><div></div></div>	<div><div></div></div>	<div><div></div></div>	<div><div></div></div>
Assumption University	EA, EA II	<div><div></div></div>	<div><div></div></div>	<div><div></div></div>	<div><div></div></div>
Augustana College	EA	<div><div></div></div>	67.6% <div><div></div></div>	<div><div></div></div>	0.0% <div><div></div></div>
Babson College	ED II, EA	33.0% <div><div></div></div>	14.7% <div><div></div></div>	2.2 <div><div></div></div>	48.7% <div><div></div></div>
Bard College	ED II, EA	<div><div></div></div>	<div><div></div></div>	<div><div></div></div>	<div><div></div></div>
Barnard College		27.0% <div><div></div></div>	4.8% <div><div></div></div>	5.6 <div><div></div></div>	64.4% <div><div></div></div>
Bates College	ED II	42.0% <div><div></div></div>	10.2% <div><div></div></div>	4.1 <div><div></div></div>	66.9% <div><div></div></div>
Baylor University	EA	<div><div></div></div>	51.0% <div><div></div></div>	<div><div></div></div>	0.0% <div><div></div></div>
Bennington College	ED II, EA	21.0% <div><div></div></div>	41.7% <div><div></div></div>	0.5 <div><div></div></div>	16.2% <div><div></div></div>
Bentley University	ED II	67.0% <div><div></div></div>	47.5% <div><div></div></div>	1.4 <div><div></div></div>	31.3% <div><div></div></div>
Boston College	ED II	<div><div></div></div>	<div><div></div></div>	<div><div></div></div>	<div><div></div></div>
Boston University	ED II	26.0% <div><div></div></div>	9.4% <div><div></div></div>	2.8 <div><div></div></div>	56.9% <div><div></div></div>
Bowdoin College	ED II	18.0% <div><div></div></div>	6.4% <div><div></div></div>	2.7 <div><div></div></div>	54.8% <div><div></div></div>
Brandeis Universitv	ED II	49.0% <div><div></div></div>	34.3% <div><div></div></div>	1.4 <div><div></div></div>	47.1% <div><div></div></div>

Institution	Additional Application Plans ▼	Early Decision (ED) Acceptance Rate (1)	Regular Decision (RD) Acceptance Rate (2)	ED to RD Acceptance Ratio	ED Admits as Percent of Freshman Class
Worcester Polytechnic Institute	ED II, EA, EA II	73.0% <div><div></div></div>	33.3% <div><div></div></div>	2.2 <div><div></div></div>	16.0% <div><div></div></div>
Stonehill College	ED II, EA, EA II	<div><div></div></div>	<div><div></div></div>	<div><div></div></div>	<div><div></div></div>
Sacred Heart University	ED II, EA, EA II	<div><div></div></div>	<div><div></div></div>	<div><div></div></div>	<div><div></div></div>
Lake Forest College	ED II, EA, EA II	49.0% <div><div></div></div>	59.5% <div><div></div></div>	0.8 <div><div></div></div>	7.8% <div><div></div></div>
Merrimack College	ED II, EA, EA II	<div><div></div></div>	<div><div></div></div>	<div><div></div></div>	<div><div></div></div>
DePauw University	ED II, EA, EA II	28.0% <div><div></div></div>	55.5% <div><div></div></div>	0.5 <div><div></div></div>	20.6% <div><div></div></div>
Wofford College	ED II, EA	<div><div></div></div>	<div><div></div></div>	<div><div></div></div>	<div><div></div></div>
Emerson College	ED II, EA	<div><div></div></div>	<div><div></div></div>	<div><div></div></div>	<div><div></div></div>
Case Western Reserve University	ED II, EA	26.0% <div><div></div></div>	34.0% <div><div></div></div>	0.8 <div><div></div></div>	15.3% <div><div></div></div>
Fairfield University	ED II, EA	90.0% <div><div></div></div>	39.8% <div><div></div></div>	2.3 <div><div></div></div>	15.7% <div><div></div></div>
Bennington College	ED II, EA	21.0% <div><div></div></div>	41.7% <div><div></div></div>	0.5 <div><div></div></div>	16.2% <div><div></div></div>
Fordham University	ED II, EA	68.0% <div><div></div></div>	56.2% <div><div></div></div>	1.2 <div><div></div></div>	9.2% <div><div></div></div>
Drew University	ED II, EA	<div><div></div></div>	<div><div></div></div>	<div><div></div></div>	<div><div></div></div>
Babson College	ED II, EA	33.0% <div><div></div></div>	14.7% <div><div></div></div>	2.2 <div><div></div></div>	48.7% <div><div></div></div>
Bard College	ED II, EA	<div><div></div></div>	<div><div></div></div>	<div><div></div></div>	<div><div></div></div>
Colorado College	ED II, EA	35.0% <div><div></div></div>	18.4% <div><div></div></div>	1.9 <div><div></div></div>	50.1% <div><div></div></div>
College of Wooster	ED II, EA	57.0% <div><div></div></div>	54.3% <div><div></div></div>	1.0 <div><div></div></div>	15.9% <div><div></div></div>
Clark University	ED II, EA	24.0% <div><div></div></div>	42.4% <div><div></div></div>	0.6 <div><div></div></div>	16.7% <div><div></div></div>
College of Charleston	ED II, EA	<div><div></div></div>	72.0% <div><div></div></div>	<div><div></div></div>	0.0% <div><div></div></div>
American University	ED II, EA	85.0% <div><div></div></div>	45.7% <div><div></div></div>	1.9 <div><div></div></div>	35.8% <div><div></div></div>

1 - 20 / 229 < >

How do we build Juan's list?

1. Make sure he is a high-flyer in every way
2. Find schools generous with need, merit, or both
3. Identify ED and ED II options
4. Identify specific merit scholarships

Identify specific merit scholarships:

Belk (Davidson)

Jefferson (UVA)

Johnson (Washington & Lee)

King-Morgridge (UW Madison)

Morehead Cain (UNC Chapel Hill)

Presidential Scholars (Villanova)

Richmond Scholars (U Richmond)

Robertson Scholars (UNC Chapel Hill and Duke)

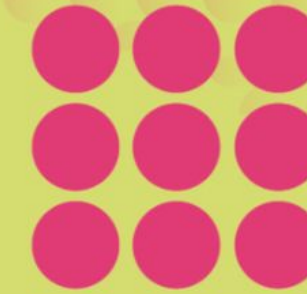
Trustee Scholarship (BU)

Walentas (UVA)

Wells Scholars (IU Bloomington)

What if Juan is a U.S. passport holder
with moderate to substantial
demonstrated financial need?

Domestic Undergraduate Need-Based and Merit Aid Class of 2027



PLEASE SEE KEY AND CAVEATS/EXPLANATIONS/DISCLAIMERS AT BOTTOM OF CHART

Compare smaller groups of institutions by selecting from the four boxes below:

Institution

State

Region

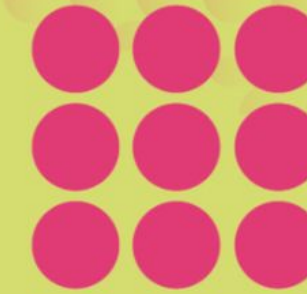
Needs Analysis

Institution ^	State	Region	Needs Analysis	Total Cost of Attendance (in-state) (I)	Total Cost of Attendance (out-of-state) (I)	Full-Time Undergrads	Average Percent Need Met (All Undergrads)	Average Merit Aid Award to Non-need Undergrads	Percent of Non-Need Undergrads Receiving Merit
Adelphi University	NY	Mid-Atlantic			\$71,834				
Agnes Scott College	GA	Southeast	FM and IM		\$64,812	896	84% <div></div>	\$32,345	99% <div></div>
Albany College of Pharmacy and Health Sciences	NY	Mid-Atlantic	FM		\$56,015	504	52% <div></div>	\$19,124	256% <div></div>
Albion College	MI	Great Lakes	FM		\$70,116	1,341	93% <div></div>	\$40,596	98% <div></div>
Alfred University	NY	Mid-Atlantic	FM and IM		\$57,900	1,399	86% <div></div>	\$22,082	50% <div></div>
Allegheny College	PA	Mid-Atlantic	FM		\$72,256	1,153	93% <div></div>	\$31,511	100% <div></div>
Alma College	MI	Great Lakes			\$63,940				

Institution	State	Region	Needs Analysis	Total Cost of Attendance (in-state) (I)	Total Cost of Attendance (out-of-state) (I)	Full-Time Undergrads	Average Percent Need Met (All Undergrads) ▾	Average Merit Aid Award to Non-need Undergrads	Percent of Non-Need Undergrads Receiving Merit
California Institute of Technology	CA	West Coast	FM and IM		\$86,886	1,023	100% <div></div>	\$0	0% <div></div>
Colorado College	CO	Rocky Mts	IM		\$87,128	2,139	100% <div></div>	\$10,572	21% <div></div>
College of the Holy Cross	MA	New England			\$80,500	3,210	100% <div></div>	\$22,909	19% <div></div>
Carleton College	MN	Plains	FM and IM		\$84,893	2,019	100% <div></div>	\$6,258	8% <div></div>
Barnard College	NY	Mid-Atlantic	FM and IM		\$89,808	3,179	100% <div></div>		0% <div></div>
Connecticut College	CT	New England	FM and IM		\$84,697	1,959	100% <div></div>	\$26,779	91% <div></div>
Bowdoin College	ME	New England	IM		\$85,100	1,845	100% <div></div>	\$961	6% <div></div>
Cornell University	NY	Mid-Atlantic	IM		\$88,140	15,955	100% <div></div>		0% <div></div>
Claremont McKenna College	CA	West Coast	FM and IM		\$86,500	1,374	100% <div></div>	\$20,142	12% <div></div>
Colby College	ME	New England	FM and IM		\$85,420	2,282	100% <div></div>	\$474	2% <div></div>
Carnegie Mellon University	PA	Mid-Atlantic	FM and IM		\$83,697	7,443	100% <div>100%</div>	\$40,421	8% <div></div>
Brown University	RI	New England	FM and IM		\$87,648	7,211	100% <div></div>	\$20,411	1% <div></div>
Bates College	ME	New England	IM		\$83,532	1,753	100% <div></div>	\$0	0% <div></div>
Amherst College	MA	New England	IM		\$87,640	2,005	100% <div></div>	\$30,724	1% <div></div>
Denison University	OH	Great Lakes			\$81,900	2,391	100% <div></div>	\$19,330	88% <div></div>
Davidson College	NC	Southeast	FM and IM		\$79,475	1,901	100% <div></div>	\$32,914	9% <div></div>
Dartmouth College	NH	New England	FM and IM		\$87,793	4,367	100% <div></div>	\$0	0% <div></div>
Columbia University	NY	Mid-Atlantic	FM and IM		\$89,587	6,578	100% <div></div>		0% <div></div>
Colgate University	NY	Mid-Atlantic	IM		\$87,070	3,188	100% <div></div>	\$0	0% <div></div>

What if Sofia, who has no financial need, is a U.S. passport holder?

Domestic Undergraduate Need-Based and Merit Aid Class of 2027



PLEASE SEE KEY AND CAVEATS/EXPLANATIONS/DISCLAIMERS AT BOTTOM OF CHART

Compare smaller groups of institutions by selecting from the four boxes below:

Institution

State

Region

Needs Analysis

Institution ^	State	Region	Needs Analysis	Total Cost of Attendance (in-state) (I)	Total Cost of Attendance (out-of-state) (I)	Full-Time Undergrads	Average Percent Need Met (All Undergrads)	Average Merit Aid Award to Non-need Undergrads	Percent of Non-Need Undergrads Receiving Merit
Adelphi University	NY	Mid-Atlantic			\$71,834				
Agnes Scott College	GA	Southeast	FM and IM		\$64,812	896	84% <div></div>	\$32,345	99% <div></div>
Albany College of Pharmacy and Health Sciences	NY	Mid-Atlantic	FM		\$56,015	504	52% <div></div>	\$19,124	256% <div></div>
Albion College	MI	Great Lakes	FM		\$70,116	1,341	93% <div></div>	\$40,596	98% <div></div>
Alfred University	NY	Mid-Atlantic	FM and IM		\$57,900	1,399	86% <div></div>	\$22,082	50% <div></div>
Allegheny College	PA	Mid-Atlantic	FM		\$72,256	1,153	93% <div></div>	\$31,511	100% <div></div>
Alma College	MI	Great Lakes			\$63,940				

Institution	State	Region	Needs Analysis	Total Cost of Attendance (in-state) (1)	Total Cost of Attendance (out-of-state) (1)	Full-Time Undergrads	Average Percent Need Met (All Undergrads)	Average Merit Aid Award to Non-need Undergrads ▾	Percent of Non-Need Undergrads Receiving Merit
Duke University	NC	Southeast	FM and IM		\$87,072	6,417	100% <div><div></div></div>	\$79,680	4% <div><div></div></div>
Swarthmore College	PA	Mid-Atlantic	IM		\$84,103	1,627	100% <div><div></div></div>	\$57,618	4% <div><div></div></div>
Washington and Lee University	VA	Southeast	FM and IM		\$87,000	1,884	100% <div><div></div></div>	\$46,700	11% <div><div></div></div>
Wellesley College	MA	New England	IM		\$86,290	2,316	100% <div><div></div></div>	\$43,713	0% <div><div></div></div>
Beloit College	WI	Great Lakes	FM and IM		\$71,959	894	96% <div><div></div></div>	\$40,919	91% <div><div></div></div>
Albion College	MI	Great Lakes	FM		\$70,116	1,341	93% <div><div></div></div>	\$40,596	98% <div><div></div></div>
Carnegie Mellon University	PA	Mid-Atlantic	FM and IM		\$83,697	7,443	100% <div><div></div></div>	\$40,421	8% <div><div></div></div>
Washington University in St. Louis	MO	Plains	IM		\$88,488	7,523	100% <div><div></div></div>	\$38,222	4% <div><div></div></div>
Susquehanna College	PA	Mid-Atlantic	FM		\$76,000	2,109	85% <div><div></div></div>	\$38,125	97% <div><div></div></div>
Kalamazoo College	MI	Great Lakes	FM and IM		\$74,208	1,357	94% <div><div></div></div>	\$37,159	93% <div><div></div></div>
Wesleyan University	CT	New England	IM		\$89,020	2,962	100% <div><div></div></div>	\$36,433	1% <div><div></div></div>
Coe College	IA	Plains	FM		\$67,712	1,236	88% <div><div></div></div>	\$36,390	98% <div><div></div></div>
DePauw University	IN	Great Lakes	FM		\$74,320	1,794	88% <div><div></div></div>	\$36,052	98% <div><div></div></div>
Centre College	KY	Southeast	FM		\$68,035	1,346	90% <div><div></div></div>	\$35,368	96% <div><div></div></div>
Juniata College	PA	Mid-Atlantic	FM		\$71,197	1,192	87% <div><div></div></div>	\$33,951	139% <div><div></div></div>
College of Wooster	OH	Great Lakes	FM and IM		\$75,800	1,870	94% <div><div></div></div>	\$33,937	101% <div><div></div></div>
Lawrence University	WI	Great Lakes	IM		\$69,849	1,379	94% <div><div></div></div>	\$33,316	97% <div><div></div></div>
Davidson College	NC	Southeast	FM and IM		\$79,475	1,901	100% <div><div></div></div>	\$32,914	9% <div><div></div></div>

Institution	State	Region	Needs Analysis	Total Cost of Attendance (in-state) (1)	Total Cost of Attendance (out-of-state) (1)	Full-Time Undergrads	Average Percent Need Met (All Undergrads)	Average Merit Aid Award to Non-need Undergrads ▾	Percent of Non-Need Undergrads Receiving Merit
Duke University	NC	Southeast	FM and IM		\$87,072	6,417	100% <div></div>	\$79,680	4% <div></div>
Swarthmore College	PA	Mid-Atlantic	IM		\$84,103	1,627	100% <div></div>	\$57,618	4% <div></div>
Washington and Lee University	VA	Southeast	FM and IM		\$87,000	1,884	100% <div></div>	\$46,700	13% <div></div>
Wellesley College	MA	New England	IM		\$86,290	2,316	100% <div></div>	\$43,713	0% <div></div>
Beloit College	WI	Great Lakes	FM and IM		\$71,959	894	96% <div></div>	\$40,919	91% <div></div>
Albion College	MI	Great Lakes	FM		\$70,116	1,341	93% <div></div>	\$40,596	98% <div></div>
Carnegie Mellon University	PA	Mid-Atlantic	FM and IM		\$83,697	7,443	100% <div></div>	\$40,421	8% <div></div>
Washington University in St. Louis	MO	Plains	IM		\$88,488	7,523	100% <div></div>	\$38,222	4% <div></div>
Susquehanna College	PA	Mid-Atlantic	FM		\$76,000	2,109	85% <div></div>	\$38,125	97% <div></div>
Kalamazoo College	MI	Great Lakes	FM and IM		\$74,208	1,357	94% <div></div>	\$37,159	93% <div></div>
Wesleyan University	CT	New England	IM		\$89,020	2,962	100% <div></div>	\$36,433	1% <div></div>
Coe College	IA	Plains	FM		\$67,712	1,236	88% <div></div>	\$36,390	98% <div></div>
DePauw University	IN	Great Lakes	FM		\$74,320	1,794	88% <div></div>	\$36,052	98% <div></div>
Centre College	KY	Southeast	FM		\$68,035	1,346	90% <div></div>	\$35,368	95% <div></div>
Juniata College	PA	Mid-Atlantic	FM		\$71,197	1,192	87% <div></div>	\$33,951	139% <div></div>
College of Wooster	OH	Great Lakes	FM and IM		\$75,800	1,870	94% <div></div>	\$33,937	101% <div></div>
Lawrence University	WI	Great Lakes	IM		\$69,849	1,379	94% <div></div>	\$33,316	97% <div></div>
Davidson College	NC	Southeast	FM and IM		\$79,475	1,901	100% <div></div>	\$32,914	9% <div></div>

Remember...it's always about getting
the list right.

Thank you!
Questions?



Jennie Kent
Big J Educational Consulting
jennie@bigjconsult.com
bigjeducationalconsulting.com