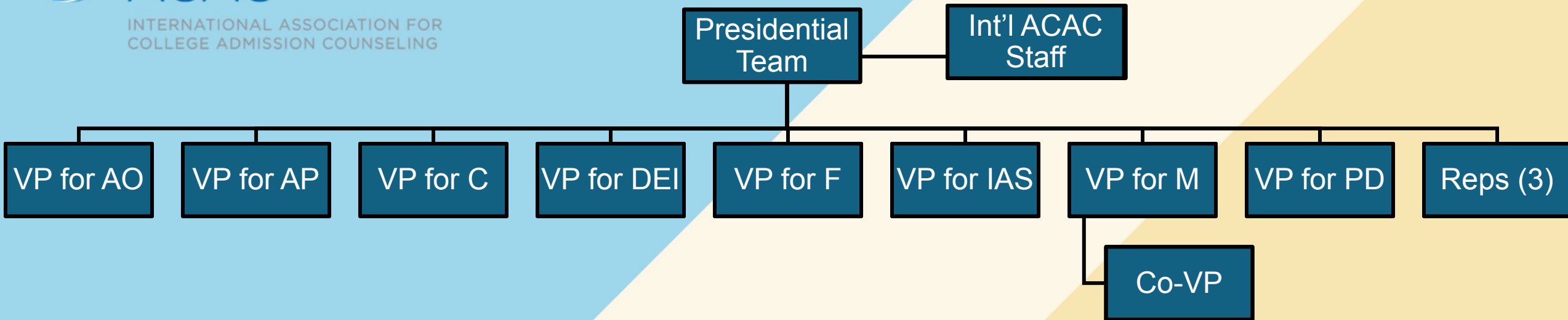


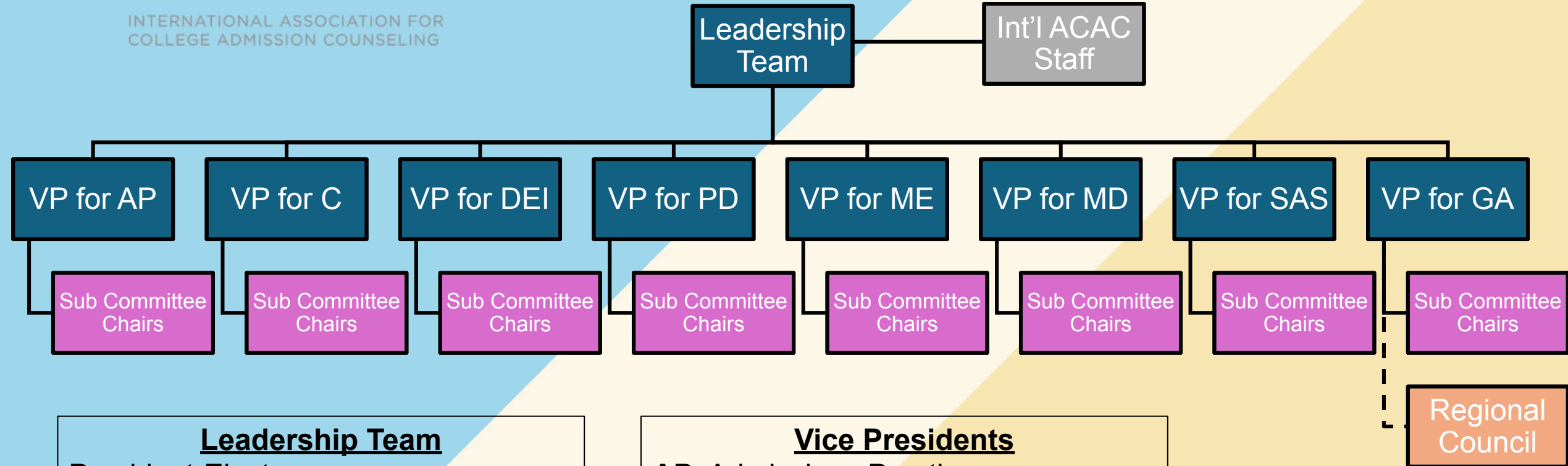
# CURRENT BOARD STRUCTURE



**Presidential Team**  
 President-Elect  
 President  
 Immediate Past President

**Vice Presidents**  
**AO:** Advocacy and Outreach  
**AP:** Admissions Practices  
**C:** Communications  
**DEI:** Diversity, Equity, and Inclusion  
**F:** Finance  
**IAS:** Inclusion, Access, and Success  
**M:** Membership  
**PD:** Professional Development

# PROPOSED BOARD STRUCTURE



## Leadership Team

President-Elect  
President  
Immediate Past President  
Executive Vice President for Finance  
Executive Director, *ex officio*

## Vice Presidents

**AP:** Admissions Practices  
**C:** Communications  
**DEI:** Diversity, Equity, and Inclusion  
**PD:** Professional Development  
**ME:** Member Engagement  
**MD:** Membership and Data  
**SAS:** Support, Access, and Success  
**GA:** Global Affairs

Regional  
Council

# STRUCTURE FOR REGIONAL COUNCIL

